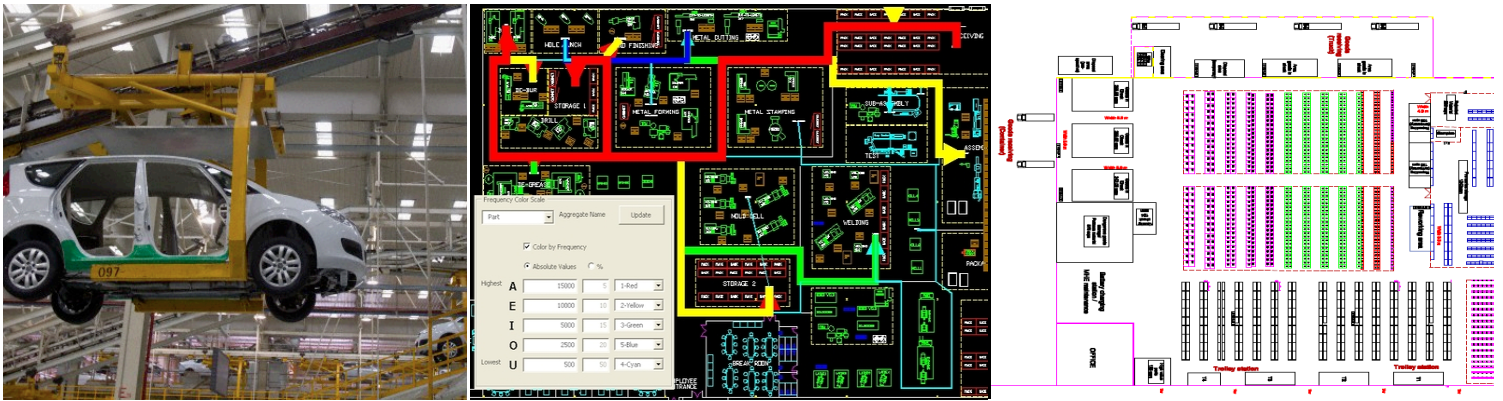


Plant Layout and Material Handling



Client Overview

World's Leading Logistics Company, providing End-to-end design, implementation and operational capabilities in Freight Forwarding, Contract Logistics, Transportation Management and Distribution Management. The Client was supporting a World Leading Automotive Company as a 3PL Provider.

Problem Statement

The production at the plant was being ramped up and the operations were being moved from a CKD to a JIT model. In order to support this transition, storage, material handling, and resources needed to be assessed for multiple growth options considering the constraints such as, number of models, production volumes, localization of parts, and increase in JIT supplies.

Methodology and Key Deliverables

ThinkLink evaluated the existing plant layout, storage infrastructure, and material flow at the site and provided a comprehensive improvement plan that would improve the overall operational efficiency at the facility. Some of the key constraints which were taken into account in the model included production volumes, models, JIT supplies and part localization.

Following were the key deliverables of the assignment:

- Created multiple storage plans to support different mix of growth and localization assumptions
- Finalized a plan that allowed phased implementation based on growth and localization targets
- Layout improved to drive higher productivity based on inventory positioning

Key Benefits

ThinkLink provided a phased implementation plan to the client that helped in implementing improvement initiatives based on prioritization of key metrics at the facility to complement the overall operational excellence of different processes.